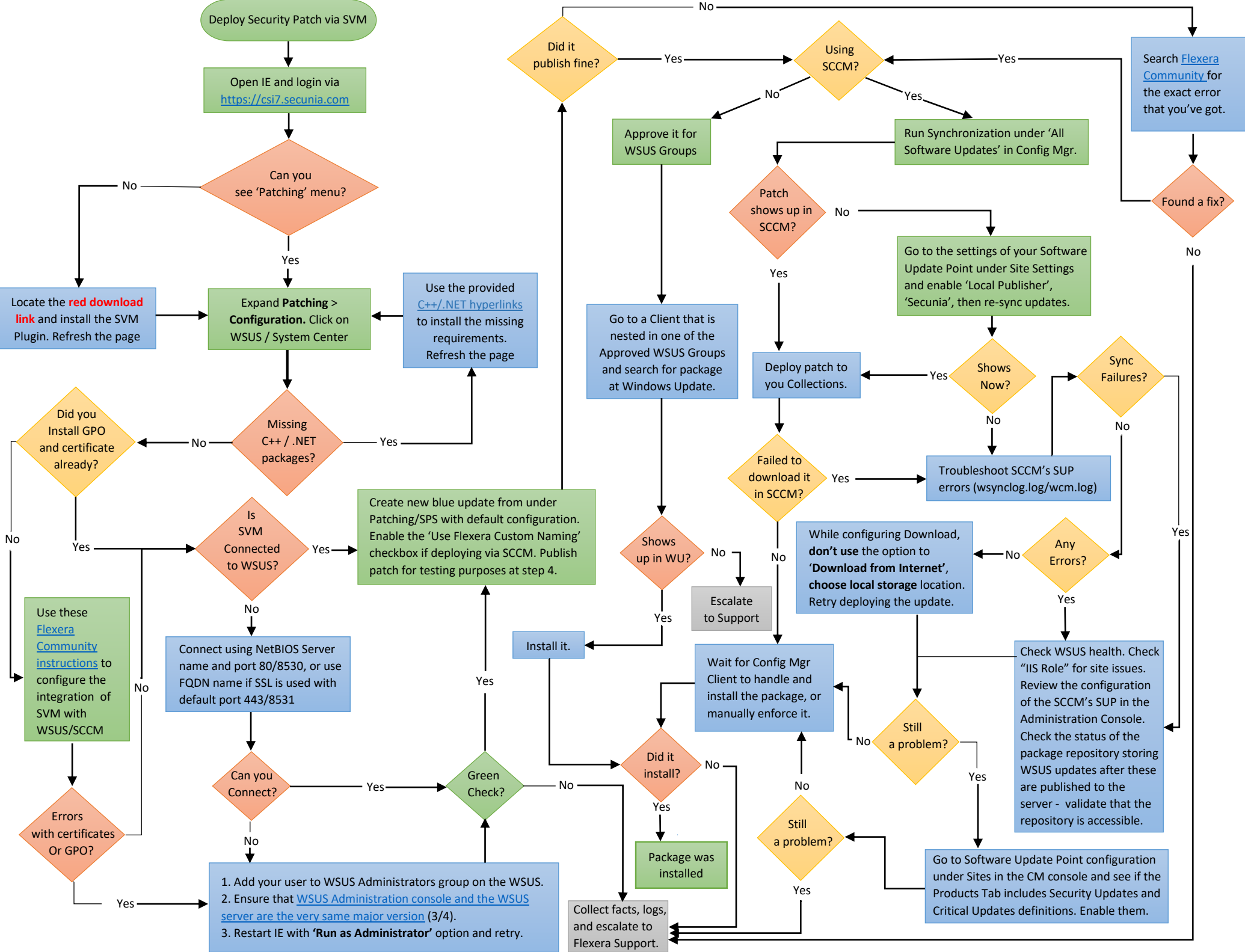


Integrate SVM with WSUS and SCCM for Patch Deployment – Logic Flow Map

Rosen Danailov

27/12/2019



1. Add your user to WSUS Administrators group on the WSUS.
2. Ensure that [WSUS Administration console and the WSUS server are the very same major version](#) (3/4).
3. Restart IE with 'Run as Administrator' option and retry.

About Flexera

Flexera is reimagining the way software is bought, sold, managed and secured. We view the software industry as a supply chain, and make the business of buying and selling software more transparent, secure, and effective. Our Monetization and Security solutions help software sellers transform their business models, grow recurring revenues and minimize open source risk. Our Vulnerability and Software Asset Management (SAM) solutions strip waste and unpredictability out of buying applications, helping companies purchase only the software and cloud services they need, manage what they have, and reduce license compliance and security risk. In business for 30+ years, our 1000+ employees are passionate about helping our 80,000+ customers generate millions in ROI every year. Visit us at: www.flexera.com



Flexera

300 Park Blvd., Suite 500

Itasca, IL 60143

USA

Itasca (Global Headquarters):

+1 800-374-4353

United Kingdom (Europe, Middle East Headquarters)

+44 370-871-1111

+44 870-873-6300

Japan (Asia, Pacific Headquarters)

+81 3-4360-8291

Australia

+61 3 9895 2000

www.flexera.com

©2017 Flexera. All rights reserved.

All other brand and product names are trademarks, registered trademarks, or service marks of their respective owners.