

SAM Monthly Best Practices Webinars

Session 8: Customizing FNMS On Prem / Flexera One ITAM

Nicolas Rousseau

nrousseau@flexera.com

Senior Product Manager

May 5th, 2022



flexera
Inform IT. Transform IT.™

Agenda

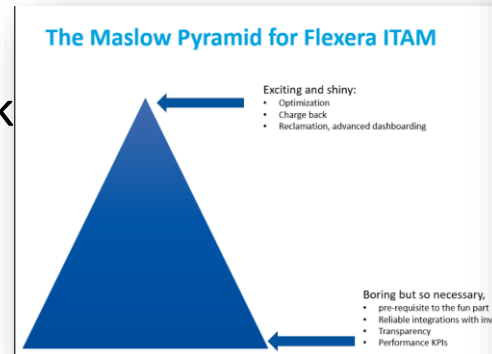
- Last session pointers and answers to questions
- News
- Customizing FNMS on Prem and Flexera One ITAM
 - Context
 - Extending fields (custom properties) (On Prem / Cloud)
 - Creating Automations (On Prem / Cloud, different approaches)
 - Customizing Inventory Imports (On Prem / Cloud, Different approaches)
 - Creating Custom SQL Reports (On Prem)
 - Creating custom web reporting objects (On prem)

Last Session: Managing Hybrid Applications with ITAM / FSM

- Useful pointers
 - Recording and PowerPoint: [here](#)
- Answers to questions:
 - No question except: “Will the recording be available and “are you going to cover M365 collected by the FlexNet Manager Beacon
 - Answers are: “Yes” and “Yes”!

News

- A “Best practice Hub” has been created
 - Pointers to all SAM Best Practices Webinars
 - Pointer to many published solutions
 - In the perspective of
 - The SAM Operations Transparency Hub (planned for Q4 2022)
 - The SAM Data Transparency Hub (planned for 2023)
 - The SAM Optimization Hub (Planned for Q3 2022)
 - Many reports
 - Can be implemented on prem in a click
 - Will be productized in ITAM / FNMS



The image is a collage of screenshots from the Flexera ITAM Community forum and documentation. The top section shows a forum post by 'nrousseau1' titled 'Flexera ITAM Best practice information available in Flexera Community', dated April 19, 2022. The post discusses sharing best practices and lists planned features for Q4 2022 and Q3 2023, including a 'SAM Operations Hub' and 'SAM Data Transparency Hub'. The middle section features a diagram titled 'The Maslow Pyramid for Flexera ITAM' with two levels: 'Exciting and shiny' (Optimization, Charge back, Reclamation) and 'Boring but so necessary' (pre-requisite, Integrations, Transparency, Performance KPIs). The bottom section shows a screenshot of the 'Virtual Machines Inventory Gaps from vCenter' report, which lists VMs not inventoried by an agent.

Customizing FlexNet Manager / ITAM: Context

- ITAM is not a “Build it yourself” platform but a content-oriented solution
- However, areas of customizations
 - UI / available fields
 - The way data is managed (automations)
 - The way data is imported
 - Reports
- Two situations
 - Cloud: a lot can be done but no direct access to the database
 - On Premise: more possibilities but more “supportability” risks

Extending UI / creating fields

- Custom properties are supported on Premise and For cloud
 - Cloud instance: open a ticket
 - On Premise: check the [System Reference Guide](#)
- More details
 - Objects can have customer properties (devices, assets, contracts, applications...)
 - A custom property is of a special type (text, drop down, numerical, date, check box)
 - You can position it in a screen, in a tab
 - The custom property will available
 - In the details
 - In the list
 - In the reporting object
 - In the Business Adapter Studio as an attribute

Adding Custom Properties

FlexNet Manager Suite 2022 R1 (On-Premises)

It is possible to add properties to underlying database objects, and have these custom properties displayed in the web interface. If you have an on-premises implementation, with your own database, you can implement the changes yourself, following the guidelines in this chapter. If you use a cloud-based implementation, you can use these chapters to create a detailed specification of your requirements, and then submit a change request to your support contact from Flexera (or your third-party managed service provider) to implement your specified changes on your behalf.

Subtopics

- [Custom Properties](#)
- [Objects You Can Customize](#)
- [Controls You Can Add](#)
- [Positioning Your Custom Control](#)
- [Creating a New Properties Tab](#)
- [Creating a New Section Within a Tab](#)
- [Creating Other Custom Properties](#)
- [Localizing Display Names of Custom Properties](#)
- [Removing a Custom Property](#)
- [Customizable Drop-Down Lists](#)

Script example for custom properties creation

- A “Mainframe” tab in contracts

```
EXEC dbo.AddTabToWebUIPropertiesPage
@TargetTypeID = 10, --Contracts
@ExcludeTargetSubTypeIDs = '2,3',--All contract types will have this tab except lease and maintenance and support
@Name = 'Tab_CustMainframe',
@CultureType = 'en-US',
@DisplayNameInPage = 'Mainframe',
@UIInsertTypeID = 2,
@RelativeTabName = 'Tab_Licenses'-- Under the license tab. The screen and tabs names are in the System Reference Guide
```

- A License rule section

```
EXEC dbo.AddSectionToWebUIPropertiesPage
@TargetTypeID = 10,
@ExcludeTargetSubTypeIDs = @ExcludedIDs,
@Name = 'LicensingRules',
@CultureType = 'en-US',
@DisplayNameInPage = 'License Rules',
@TabName = 'Tab_CustMainframe',
@UIInsertTypeID = 3,
@RelativePositionTo = 'Tab_CustMainframe'
```

- A Mainframe metric text field

```
EXEC dbo.AddPropertyToWebUIPropertiesPage
@TargetTypeID = 10,
@ExcludeTargetSubTypeIDs = @ExcludedIDs,
@Name = 'MainframeMetric',
@CultureType = 'en-US',
@DisplayNameInPage = 'Mainframe Metric',
@TabName = 'Tab_CustMainframe',
@DisplayNameInReport = 'Mainframe Metric',
@UIFieldTypeID = 4, --This is the text type
@UIInsertTypeID = 2,
@RelativePositionTo = 'LicensingRules',
@Position = 1,
@Width = 1
```

Contract Properties Mainframe License - Last Month MSU using z/OS

Contract type: Software License

License Rules

Mainframe Metric	MSU Period Peak
Reference App.	z/OS V2
Anniv. Date	01/01/2019
Measur. Duration (Mth)	

Buttons: Save, Close

Sidebar tabs: General, Ownership, Vendors, Purchases, Licenses, Mainframe (selected)

Custom Properties

- Think twice before creating one
 - Does the attribute exist?
 - Could an existing unused attribute be used?
- The data is stored in specific table (XXProperty / XXPropertyValue) tricky to query in SQL
- The data is available

SQLQuery9.sql - S...NMP (FLEX\AD (64)) * SQLQuery8.sql - S...NMP (FLEX\AD (58)) * SQLQuery7.sql - S...NMP (FLEX\AD (52)) * SQLQuery5.sql - S...NMP (FLEX\AD (55)) * SQLQuery

```

1 SELECT * FROM ContractProperty
2 SELECT * FROM ContractPropertyValue
    
```

100 % <

Results Messages

	ContractPropertyID	ContractTypeID	PropertyName	CustomPropertyDisplayXMLID
61	1052	4	MeasurementDurationMonth	NULL
62	2052	1	ServiceNowContractNo	NULL
63	2053	2	ServiceNowContractNo	NULL
64	2054	3	ServiceNowContractNo	NULL
65	2055	4	ServiceNowContractNo	NULL
66	2056	5	ServiceNowContractNo	NULL

	ContractPropertyValueID	ContractID	ContractPropertyID	Property Value	Creation User	Creation Date	Updated User	Updated Date
16	1008	1034	1029	z/OS V2	FLEX\AD	2019-12-07 03:13:13.273	FLEX\AD	2019-12-07 03:13:13.273
17	1009	1034	1051	2019-07-01T00:00:00.000	FLEX\AD	2019-12-07 03:13:13.273	FLEX\AD	2020-02-27 07:54:38.540
18	1010	1034	1052	12	FLEX\AD	2020-02-10 07:16:14.430	FLEX\AD	2020-02-27 07:54:38.540
19	1011	1035	1017	Isolated LPAR-MSU	FLEX\AD	2020-02-19 00:03:35.483	FLEX\AD	2020-02-19 00:03:35.490
20	1012	1035	1051	2019-01-01T00:00:00.000	FLEX\AD	2020-02-19 00:03:35.493	FLEX\AD	2020-02-19 00:03:35.493
21	1013	1035	1052	12	FLEX\AD	2020-02-19 00:03:35.493	FLEX\AD	2020-02-19 00:03:35.493
22	1016	1036	1017	Mainframe MSU	FLEX\AD	2020-03-12 16:51:23.713	FLEX\AD	2020-03-12 16:51:23.717
23	1017	1037	1017	Mainframe MIPS - IBM	FLEX\AD	2020-03-13 19:04:57.037	FLEX\AD	2020-03-13 19:04:57.037
9	1003	1032	1029	z/OS V2	FLEX\AD	2019-10-17 07:29:58.097	FLEX\AD	2019-10-17 07:29:58.097
10	1004	1032	1051	2019-01-01T00:00:00.000	FLEX\AD	2019-11-03 02:58:44.973	FLEX\AD	2019-11-03 02:58:44.973

Contract import example.xml

FlexNet Manager Platform Database Connection

Database Connection

☒ Use the default settings from this computer

☐ Use the specific connection information below

Connection String

☐ Encrypt Connection String

Encryption is specific both to the computer on which the adapter is run, and to the account used to run the business importer. Do not apply encryption unless this is the production machine and operational account. You can encrypt on the target system by running the business importer with the /Encrypt option.

Advanced Properties

☐ Run the import in a transaction

Contract

- Contract No
- Contract Description
- Contract Type
- Contract Status
- Start Date
- Expiry Date
- Evergreen
- Review Date
- Next Renewal Date
- Last Renewed Date
- Monthly Amount
- Monthly Amount Currency
- Global Amount
- Global Amount Currency R
- Vendor ID
- Master Contract ID
- Previous Contract ID
- Location ID
- Corporate Unit ID
- Cost Center ID
- Category ID
- Amprv. Date
- Mainframe Metric
- Measur. Duration (Mth)
- Reference App.
- SN Contract No:

Reopen the business adapter so that it loads the custom properties

All Contracts

All contracts including terms, conditions and payment schedules.

Contract no. contains mnf Add filter

Delete

6 results returned 20 rows per page

<input type="checkbox"/>	Contract no.	Mainframe Metric	Description
<input type="checkbox"/>	mnf		
<input type="checkbox"/>	MNF-IBMMIPSAverageSinceAnniv-zOS	IBM MIPS Average	Mainframe License - IBM MIPS Using z/OS Average Since Anniv
<input type="checkbox"/>	MNF-IsolatedLPARMSU1janv12Month	Isolated LPAR-MSU	Mainframe License - Isolated LPAR-MSU Starts 1st Jan
<input type="checkbox"/>	MNF-LastMonthMSU-zOS	MSU Period Peak	Mainframe License - Last Month MSU using z/OS
<input type="checkbox"/>	MNF-Mainframe MIPS-IBM	Mainframe MIPS - IBM	Mainframe License _ Mainframe MIPS - IBM

Report Builder

New report

Configure

- Contract Child contracts Add

Contract number Name

☒ Include in search ☒ Include in search

Location - last level

Mainframe Metric

Master contract ID

Master contract name

Master contract no.

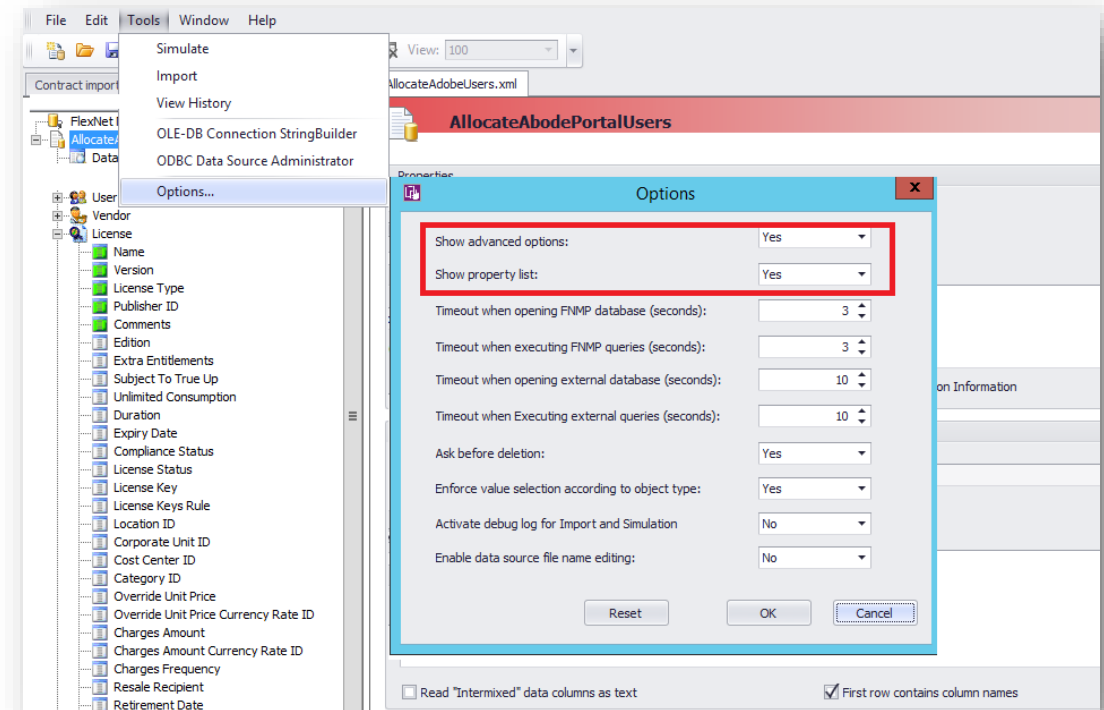
Manager

Master contract

Vendor

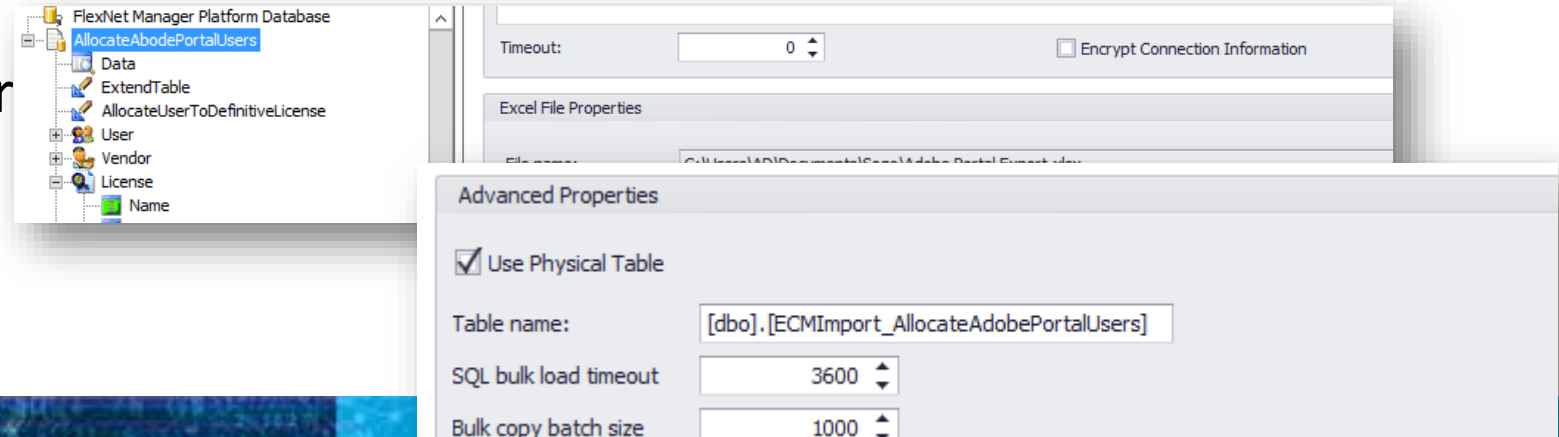
Automations

- Goal: avoid manual tasks in UI (set location, set status, allocate)
- When Possible: Business Adapter to update “exposed” objects
 - Reading a third-party source
 - Reading FNMS / ITAM directly
 - Through SQL connection
 - Web Service (or PowerShell)
- Otherwise, Script
 - ITAM Cloud:
 - Read data in a source (incl. ITAM) / Perform complex scripts locally / Update exposed objects
 - On Premise:
 - Custom step of inventory import calling a stored procedure (preferred)
 - Business Adapter full version “Custom SQL”
 - SQL Agent



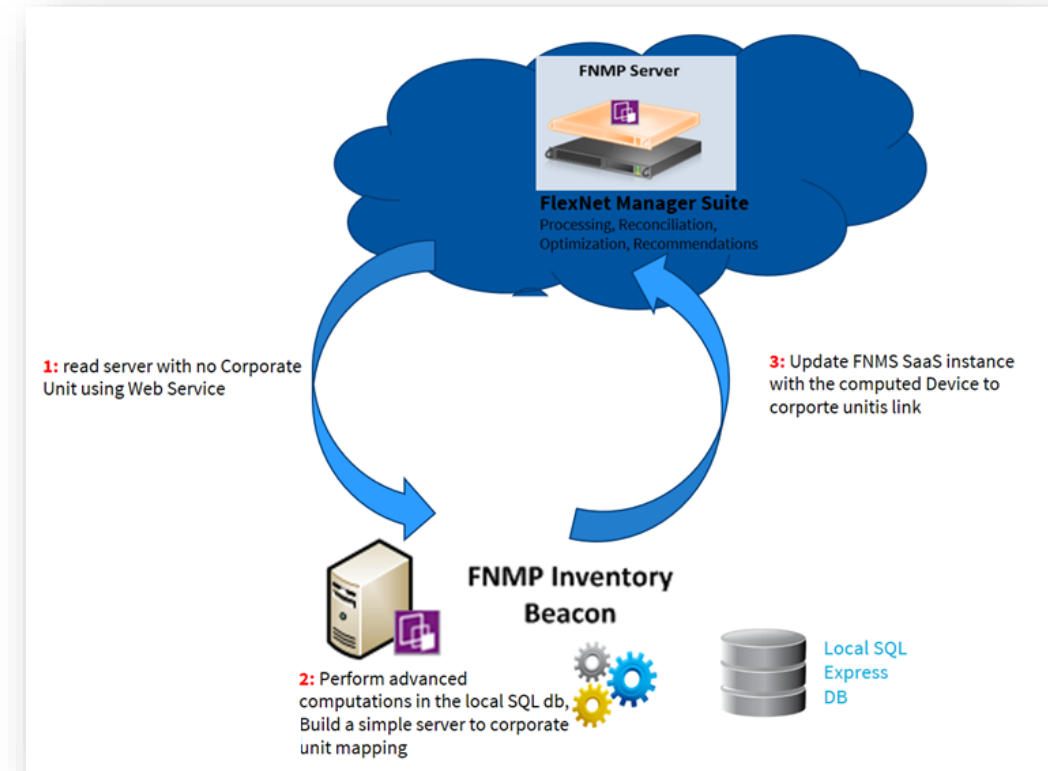
Automations / Business Adapter

- From the beacon
 - Pro:
 - Logging in Web UI
 - Compatible with ITAM Cloud
 - Scheduling UI
 - Cons: no access to the database (no deletion, can only update exposed objects)
- Full Version
 - Activate “advanced options” and “show property list”
 - Use Physical table
 - Custom Query superpower



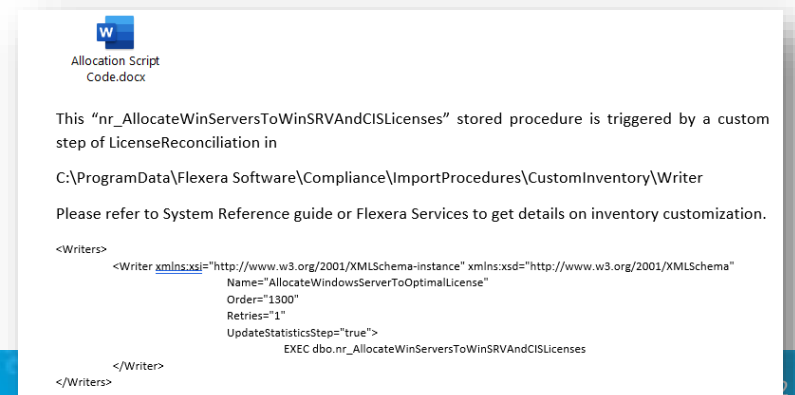
Automations / Business Adapter + local SQL instance

- Check this post
 - [Allocation Automation Example for FNMS Cloud](#)
- Provides the pre-requisites (SOAP API activation)
- Use The Or the REST APIs (generic API for Q2 / Q3 for any report result)
- Full version of the Business Adapter
 - Reads the data (SOAP API (GetCustomViewResult) [REST APIs](#) (generic API for Q2 / Q3 for any report result)
 - Stores data in a local SQL Database
 - Magics happen with SQL scripting (performed from the Custom SQL objects of the full Business Adapter)
- The simple version of the Beacon:
 - Reads in the SQL database
 - Updates ITAM for exposed objects (device status, device entity...)
- In the end, without the ability, without a direct access to the database, to apply complex SQL logic!



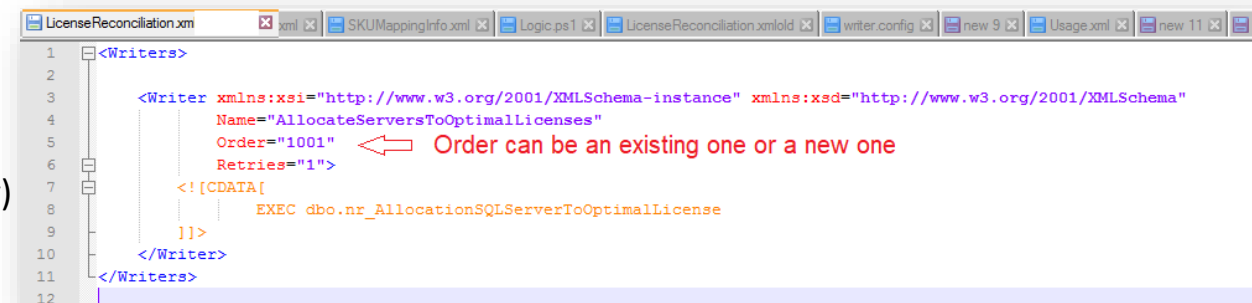
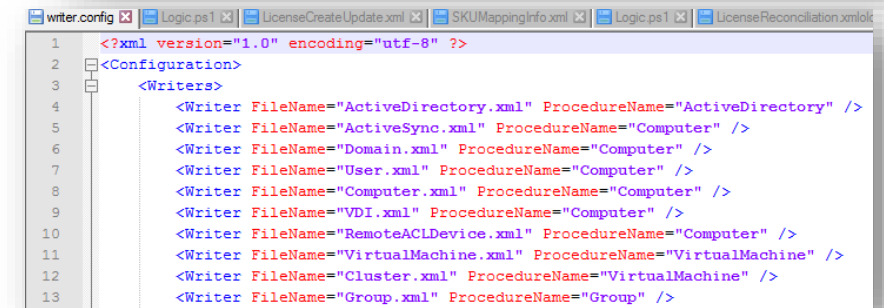
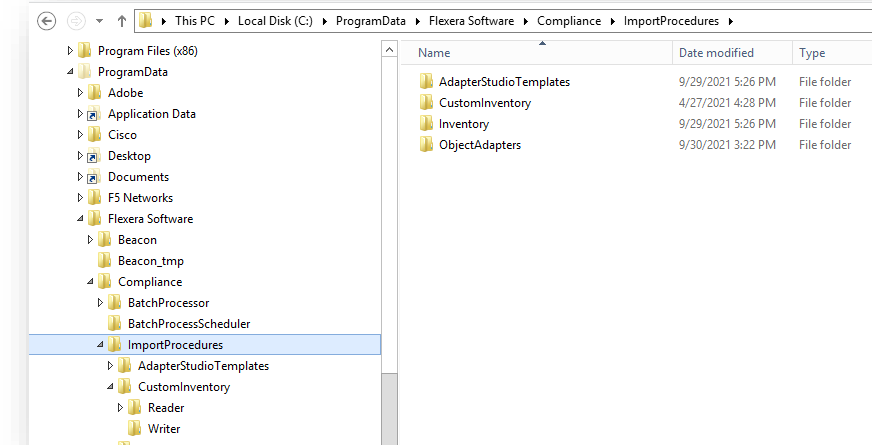
Automations On Prem

- Any complex SQL logic can be stored as a stored procedure in the database
 - Be careful to prefix the SP name (“nr_” for instance) so that it does not get overwritten by an upgrade
- This Stored procedure can be called
 - By a SQL agent
 - By a custom step in the Custom Inventory
 - Preferred approach because avoids risk for locks with existing import process
 - Example in [FNMS - Windows Server and SQL Server Optimization reports \(on Premise\)](#)
 - P12 of documentation attached to KB article. For allocations.
 - C:\ProgramData\Flexera Software\Compliance\ImportProcedures\CustomInventory\Writer
 - Need to create a CustomInventory folder. Importer will assess a diff of out of the box and custom



Customizing “readers” or “writers” (on Prem)

- FNMS has a mature customization logic
 - On batch processor (central) and beacons (copy)
- The out of the box import
 - Checks anything in C:\ProgramData\Flexera Software\Compliance\ImportProcedures\CustomInventory\
 - If a step has been added to the logic, it inserts it in the OOTB logic
 - If a step has been modified, it runs the custom one only
- Important files
 - Importer.xml
 - C:\ProgramData\Flexera Software\Compliance\ImportProcedures\Inventory\
 - Contains sequence of import procedures
 - Must be duplicated in the CustomInventory folder
 - Writer.config
 - C:\ProgramData\Flexera Software\Compliance\ImportProcedures\Inventory\writer
 - Sequence of files that will be processed
 - WriterOrReaderFile.xml
 - This is the file that will be copied from the OOTB import
 - Just keep the modified or added steps + comment (traceability)
- Migration: recheck and report into new logic!



Imports customization for ITAM Cloud

- No access to the central server => no customization of writers
 - Ran from the central server
- Even reader files cannot be customized
 - Because files are copied from Application servers to beacon
 - However, here is a trick on how to “derive” an out of the box reader into a custom one: <https://community.flexera.com/t5/FlexNet-Manager-Knowledge-Base/Office-365-import-is-failing-during-the-Usage-step-Usage-xml/ta-p/5767>
- Principle:
 - Create a local copy of the files
 - Reference them in the configuration files of your new inventory type that will be available from the beacon UI

Creating Custom SQL Report (On Premise)

```
Use FNMP
IF OBJECT_ID ('dbo.MyCustProcedure', 'P') IS NOT NULL
DROP PROCEDURE dbo.MyCustProcedure -- drop Stored Procedure if it exists
GO
CREATE PROCEDURE dbo.MyCustProcedure AS
--Do whatever query you wish here to select data

SELECT
cc.ComputerName as 'Computer Name'
, cc.ProcessorType as 'Processor Type'
, cu.UserName as 'Main User'
, cu.Email as 'Main User email'

FROM ComplianceComputer cc
INNER JOIN ComplianceComputerCurrentUserScoped cc2 on cc2.ComplianceComputerID = cc.ComplianceComputerID -- scope the data
LEFT JOIN ComplianceUser cu on cu.ComplianceUserID = cc.PrimaryComplianceUserID

GO

DECLARE @ViewName nvarchar(64), @tenant int
SET @ViewName = 'MyCustView' -- Unique Name you want to display for object
SET @tenant = 1 -- Tenant for which this view applies
EXEC ComplianceCustomViewRegister
    @TenantID = @tenant ,
    @ComplianceSavedSearchSystemID = NULL,
    @SearchName = @ViewName,
    @SearchNameResourceName = NULL,
    @Description = 'v1: This is a sample of custom SQL Report',
    @DescriptionResourceName = NULL,
    @SearchGridLayout = NULL,
    @SearchXML = NULL,
    @SearchSQL = 'EXEC dbo.MyCustProcedure',
    @SearchSQLConnection = 'Live',
    @SearchMapping = NULL,
    @ComplianceSearchType = 'Custom',
    @ComplianceSearchFolderSystemID = -17, --will create the view at the root folder. Pick up the folder ID you wish
    @CanDelete = 1,
    @CanChangeMasterObject = 0
```

Creating Custom Web Reporting Objects

- This is one level higher in term of complexity
 - Objects are stored as “ComplianceSearchType” and Objects as “ComplianceSerachTypeColumn”
 - Create a new: “Days since last inventory” attribute in inventory

```
EXEC dbo.ComplianceCustomViewColumnRegister
    @TenantID = 1,                -- REQUIRED - set Tenant
    @ComplianceSearchType = 'Computer', --REQUIRED - links to object
    @ColumnName = 'DaysSincelastInventory_c', -- column name displayed in GUI
    @ColumnNameResourceName = NULL,
    @SelectName = 'DateDiff (Day, CAST (InventoryDate as date), GetDate())', -- view\column from query
    @WhereClause = 'DateDiff (Day, CAST (InventoryDate as date), GetDate())', -- view\column from query
    @FilterGroupType = 1, -- do not change
    @DefaultFilterType = 1, -- do not change
    @SelectByDefault = 0 -- 1 = box is checked for view; 0 = box is not checked for view
```

- Create a New: “vCenter IP Address” attribute for cluster object

```
EXEC dbo.ComplianceCustomViewColumnRegister
    @TenantID = 1,                -- REQUIRED - set Tenant
    @ComplianceSearchType = 'Cluster', --REQUIRED - links to object
    @ColumnName = 'vCenter_c', -- column name displayed in GUI
    @ColumnNameResourceName = NULL,
    @SelectName = 'SUBSTRING (ExternalName, 1, CHARINDEX ('|',ExternalName + '|') -1)', -- view\column from query
    @WhereClause = 'SUBSTRING (ExternalName, 1, CHARINDEX ('|',ExternalName + '|') -1)', -- view\column from query
    @FilterGroupType = 1, -- do not change
    @DefaultFilterType = 1, -- do not change
    @SelectByDefault = 0 -- 1 = box is checked for view; 0 = box is not checked for view
```

Creating a new Object with columns and linking to others

- Example: computer license consumption
- Higher complexity. Experts only
- Steps
 - Create a view (with the right prefix!)
 - Declare Strings, Translate (make sure no conflict with existing strings)
 - Create the Object (ComplianceSearchType)
 - Link to other existing Objects
 - Create Columns (ComplianceSearchTypeColumn)

Answers to questions

- How can I get a copy of the demo slides?/Are the previous sessions recorded? If so, where can they be found/Can you provide the link to the previously covered material?
 - In the [Community Hub](#), Web Practices Webinars are announced and recordings / presentation are shared
- Are you covering any capabilities of the rest api access? i have tried to access flexera one API with limited success in Q4 2021
 - There is a section in this presentation on the REST APIs and a link to the [documentation](#)
 - A PowerShell example was just released in this [Community KB article](#) that queries one by one the licenses for their consumption results and goes through pages of the output
- Will the roadmaps of what's upcoming/planned be available in the same style?
 - The question was on [Best Practice Hub](#). The post shows the vision on the coming three hubs. There will be other pointers two what is coming. The full roadmap presentation is unfortunately not public.
- Is there a long-term goal to make this customization "mainframe view" available to ITAM Cloud customers?
 - Honestly, this was a super heavy customization (SCRT file parsing, data historization)... but coming support of zOS (TADz will no longer be necessary) and some interest with our customers could help us prioritize. No planned feature yet.
- How can we add custom properties to the adapters for ITAM Cloud customers?
 - The custom properties are loaded from the beacon schema files that are loaded from the central instance
- The scripts for custom properties creation are for on-prem /cloud?
 - On prem only... but these are the scripts Support will run to create the custom properties in the cloud environments too

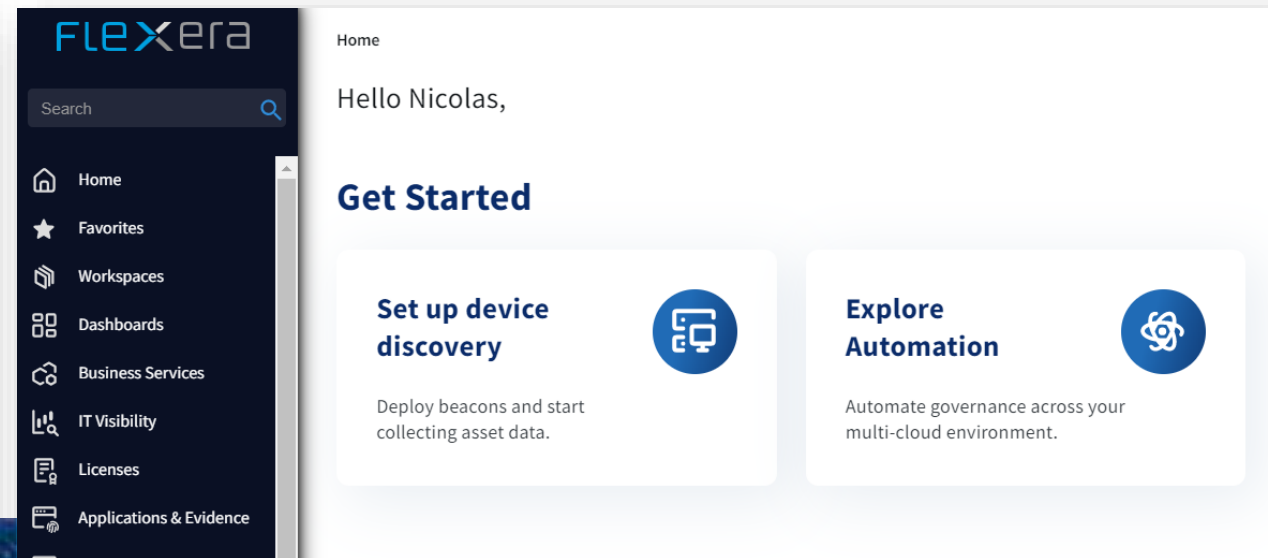
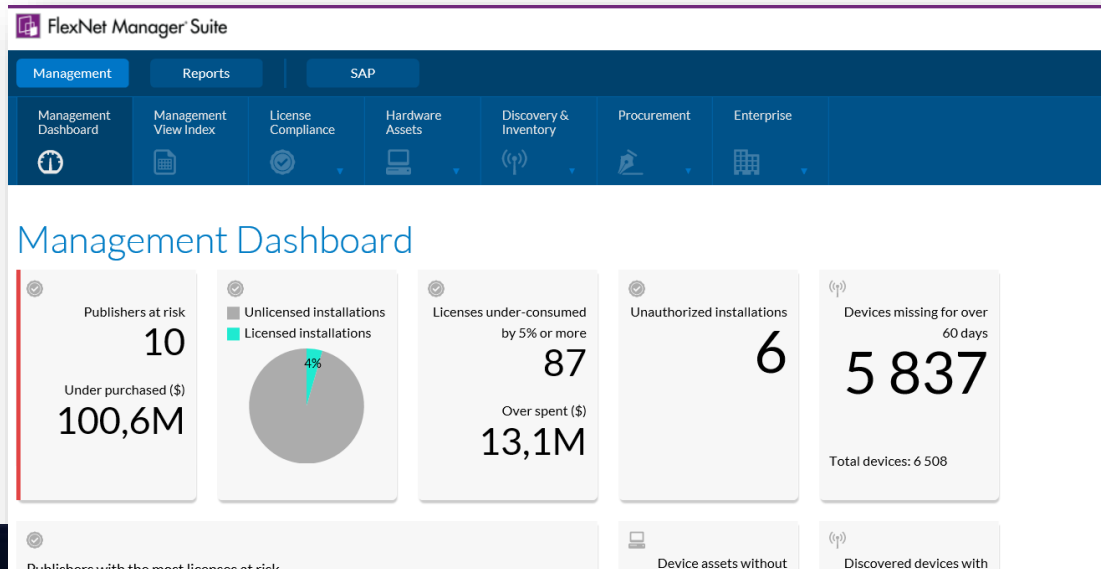
Answers to questions (2)

- We use the BAS to stage data into FNMSstaging, then the BeaconUI to load into the Cloud. We have an automation package to load data into the staging database, but must use the BeaconUI to schedule. This is not always optimal. Will we be able to initiate externally the process normally launched by the beaconUI scheduler?
 - I am not aware of any Beacon command line
- Can you pass parameters to the SOAP API?
 - The GetCustomViewResult API has a unique parameter that is the customViewID. You can use a PowerShell or a former version of the Business Adapter (2016R1).

```
<?xml version="1.0" encoding="utf-8"?>
<soap:Envelope xmlns:xsi="http://www.w3.org/2001/XMLSchema-instance" xmlns:xsd="http://www.w3.org/2001/XMLSchema" xmlns:soap="http://schemas.xmlsoap.org/soap/envelope/">
  <soap:Body>
    <GetCustomView xmlns="http://tempuri.org/">
      <customViewID>29249</customViewID>
      <searchString></searchString>
      <rowLimit>100000</rowLimit>
      <tenantUID>77UNZFNKQKC64UVY</tenantUID>
    </GetCustomView>
  </soap:Body>
</soap:Envelope>
```

Answers to questions (3)

- If we are doing migration from on prem to cloud, will existing customization will be affected? Regards.
 - The on premise to Cloud migration is based on a database Backup / Migrate / Transform / Restore
 - Some customizations
 - Will be kept (Custom Properties)
 - Will need to be redeveloped (Business adapters using SQL queries, SQL agents)
 - Will not be ported to the cloud (Custom SQL Reports, Additional Web Reporting Objects, writer customizations, Stored Procedures...)
 - That said:
 - Most of shared reports have been or will be productized
- Since I'm new to Flexera, how can I tell if we have the 'on-prem' version or not?
 - If you are new, you are likely to be a Cloud customer. Left screen shot is on prem, right is Cloud





THANK YOU