

Overview of Directory Tables in MSI Package

The screenshot displays the 'Direct Editor' window in an MSI package editor. The main area shows a list of directory tables. The columns are: Directory - (s72), Directory_Parent - (s72), DefaultDir - (i255), ISDescription - (s255), and ISAttributes - . The list includes various system and application directories such as TARGETDIR, DATABASEDIR, INSTALLEDIR, and USERPROFILE.

Directory - (s72)	Directory_Parent - (s72)	DefaultDir - (i255)	ISDescription - (s255)	ISAttributes -
TARGETDIR		SourceDir		0
DATABASEDIR	ISYourDataBaseDir			0
INSTALLEDIR	ProgramFilesFolder	MOZILLA~1 Mozilla Firefox		0
ISUpdatesServiceFol	ISCommonFilesFolder	UPDATE~1 UpdateService		0
ALLUSERSPROFILE	TARGETDIR	..ALLUSE~1 All Users		0
USERPROFILE	TARGETDIR	..USERPR~1 UserProfile		0
WindowsFolder	TARGETDIR	..Windows		0
AdminToolsFolder	TARGETDIR	..Admin~1 AdminTools		0
AppDataFolder	TARGETDIR	..APPLIC~1 Application Data		0
CommonAppDataFol	TARGETDIR	..Common~1 CommonAppData		0
CommonFiles64Fold	TARGETDIR	..Common64		0
CommonFilesFolder	TARGETDIR	..Common		0
ISYourDataBaseDir	INSTALLDIR	Database		0
DesktopFolder	TARGETDIR	..Desktop		3
FavoritesFolder	TARGETDIR	..FAVORI~1 Favorites		0
FontsFolder	TARGETDIR	..Fonts		0
GlobalAssemblyCach	TARGETDIR	..Globa~1 GlobalAssemblyCache		0
ISMyProductDir	ISMyCompanyDir	MYPROG~1 My Product Name		0
ISCommonFilesFolder	CommonFilesFolder	Instal~1 InstallShield		0
ProgramFilesFolder	TARGETDIR	..PROGRA~1 program files		0
ISMyCompanyDir	ProgramFilesFolder	MYCOMP~1 My Company Name		0
LocalAppDataFolder	TARGETDIR	..Local~1 LocalAppData		0
MyPicturesFolder	TARGETDIR	..MyPict~1 MyPictures		0
PersonalFolder	TARGETDIR	..Personal		0
PrimaryVolumePath	TARGETDIR	..Primar~1 PrimaryVolumePath		0
ProgramFiles64Fold	TARGETDIR	..Prog64~1 Program Files 64		0
ProgramMenuFolder	TARGETDIR	..Programs		3
SendToFolder	TARGETDIR	..SendTo		3
StartMenuFolder	TARGETDIR	..STARTM~1 Start Menu		3
StartupFolder	TARGETDIR	..Startup		3
System16Folder	TARGETDIR	..System		0
System64Folder	TARGETDIR	..System64		0
SystemFolder	TARGETDIR	..System32		0
TempFolder	TARGETDIR	..Temp		0
TemplateFolder	TARGETDIR	..ShellNew		0
WindowsVolume	TARGETDIR	..WinRoot		0
MOZILLA	AppDataFolder	Mozilla		0
FIREFOX	MOZILLA	Firefox		0
PROFILES	FIREFOX	Profiles		0
DR1T97GE.DEFAULT	PROFILES	DR1T97~1 dr1t97ge.default		0

At the bottom of the window, there is a status bar with the text: 'For Help, press F1', 'Connected to: WS39', and 'Input Active MD: Yes CAP: NUM: SCRL:'. A notification box in the bottom right corner reads: 'DameWare Mini Remote Control MRC Notification The following user has connected via remote control. User ID: ale'.

ws39 - Connected - DameWare Mini Remote Control - [1]

File Send Monitor View SFI Help

Start Page Project Assistant Installation Designer Direct Editor

Update Service
 Organization
 Setup Design
 Features
 Components
 DIM References
 Application Data
 Files and Folders
 Redistributables
 Mobile Devices
 System Configuration
 Shortcuts
 Registry
 ODBC Resources
 INI File Changes
 Environment Variables
 XML File Changes
 Server Configuration
 Internet Information Services
 Component Services
 SQL Scripts
 Behavior and Logic
 InstallScript
 Custom Actions
 Sequences
 Support Files
 System Search
 Property Manager
 User Interface
 Dialogs
 Media
 Path Variables
 Upgrades
 Releases
 Patch Design
 Distribute
 Additional Tools
 Dependency Scanners
 MSI Debugger
 Direct Editor

Tables
 Summary Information
 ActionText
 AdminExecuteSequence
 AdminUISequence
 AdvExecuteSequence
 AdvUISequence
 AppId
 AppSearch
 BBControl
 Billboard
 Binary
 BindImage
 CCPSearch
 CheckBox
 Class
 ComboBox
 CompLocator
 Complus
 Component
 Condition
 Control
 ControlCondition
 ControlEvent
 CreateFolder
 CustomAction
 Dialog
 Directory
 DrLocator
 DuplicateFile
 Environment
 Error
 EventMapping
 Extension
 Feature
 FeatureComponents
 File
 FileSFPCatalog
 Font
 Icon
 IniFile
 Inilocator

Directory - (S72)	Directory_Parent - (S72)	DefaultDir - (I255)	ISDescription - (S255)	ISAttributes - (
WindowsVolume	TARGETDIR	..WinRoot		0
MOZILLA	AppDataFolder	Mozilla		0
FIREFOX	MOZILLA	Firefox		0
PROFILES	FIREFOX	Profiles		0
DR1T97GE.DEFAULT	PROFILES	DR1T97~1 dr1t97ge.default		0
BOOKMARKBACKUP	DR1T97GE.DEFAULT	BOOKMA~1 bookmarkbackups		0
CHROME	DR1T97GE.DEFAULT	chrome		0
MOZILLA1	LocalAppDataFolder	Mozilla		0
FIREFOX1	MOZILLA1	Firefox		0
PROFILES1	FIREFOX1	Profiles		0
DR1T97GE.DEFAULT	PROFILES1	DR1T97~1 dr1t97ge.default		0
CACHE	DR1T97GE.DEFAULT1	Cache		0
MICROSOFT_SQL_S	ProgramFilesFolder	MICROS~1 Microsoft SQL Server		0
MSSQL_1	MICROSOFT_SQL_SERVER	MSSQL_1		0
MSSQL	MSSQL_1	MSSQL		0
CHROME1	INSTALLDIR	chrome		0
COMPONENTS	INSTALLDIR	COMPON~1 components		0
DEFAULTS	INSTALLDIR	defaults		0
AUTOCONFIG	DEFAULTS	AUTOOCO~1 autoconfig		0
PREF	DEFAULTS	pref		0
PROFILE	DEFAULTS	profile		0
CHROME2	PROFILE	chrome		0
EXTENSIONS	INSTALLDIR	EXTENS~1 extensions		0
_972CE4C6_7E08_4	EXTENSIONS	{972CE4C6-7E08-4474-a285-3208198c}		0
GREPREFS	INSTALLDIR	greprefs		0
PLUGINS	INSTALLDIR	plugins		0
RES	INSTALLDIR	res		0
DTD	RES	dtd		0
ENTITYTABLES	RES	ENTITY~1 entityTables		0
FONTS	RES	fonts		0
HTML	RES	html		0
SEARCHPLUGINS	INSTALLDIR	SEARCH~1 searchplugins		0
UNINSTALL	INSTALLDIR	UNINST~1 uninstall		0
EXTENSIONS1	DR1T97GE.DEFAULT	EXTENS~1 extensions		0
MOZILLA_FIREFOX	FIREFOX1	MOZILL~1 Mozilla Firefox		0
UPDATES	MOZILLA_FIREFOX	updates		0
UPDATES	UPDATES	0		0
_1_alle_programme	StartMenuFolder	01ALLE~1 01 alle Programme		3
mozilla_firefox1	ProgramMenuFolder	MOZILL~1 Mozilla Firefox		3
Click here to add a new entry				

Files built
 Media table successfully built
 Performing Upgrading and Patching Validation

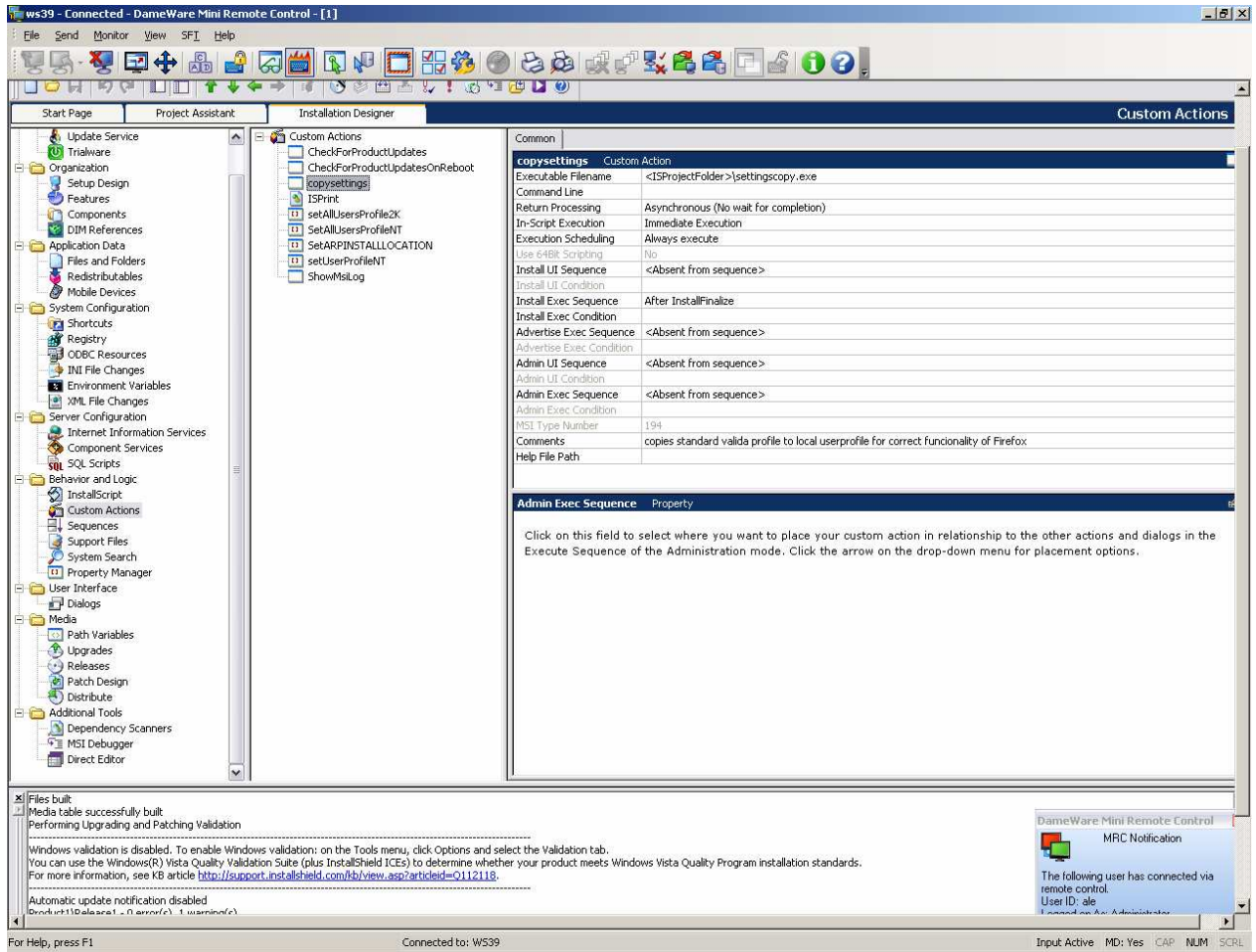
Windows validation is disabled. To enable Windows validation: on the Tools menu, click Options and select the Validation tab.
 You can use the Windows(R) Vista Quality Validation Suite (plus InstallShield ICES) to determine whether your product meets Windows Vista Quality Program installation standards.
 For more information, see KB article <http://support.installshield.com/kb/view.asp?articleid=Q112118>.

Automatic update notification disabled
 D:\A\11\Delaware1...0 error(s), 1 warning(s)

DameWare Mini Remote Control
 MRC Notification
 The following user has connected via remote control
 User ID: ale
 Logged on as: Administrator

For Help, press F1 Connected to: WS39 Input Active MD: Yes CAP: NUM: SCRL

And the custom Action is stored in the binary table (correct?)



And the ini File Table looks like this

ws39 - Connected - DameWare Mini Remote Control - [1]

File Send Monitor View SFI Help

Start Page Project Assistant Installation Designer Direct Editor

Update Service
 Organization
 Setup Design
 Features
 Components
 DIM References
 Application Data
 Files and Folders
 Redistributables
 Mobile Devices
 System Configuration
 Shortcuts
 Registry
 ODBC Resources
 INI File Changes
 Environment Variables
 XML File Changes
 Server Configuration
 Internet Information Services
 Component Services
 SQL Scripts
 Behavior and Logic
 InstallScript
 Custom Actions
 Sequences
 Support Files
 System Search
 Property Manager
 User Interface
 Dialogs
 Media
 Path Variables
 Upgrades
 Releases
 Patch Design
 Distribute
 Additional Tools
 Dependency Scanners
 MSI Debugger
 Direct Editor

Tables
 Summary Information
 ActionText
 AdminExecuteSequence
 AdminUISequence
 AdvtExecuteSequence
 AdvtUISequence
 AppId
 AppSearch
 EBControl
 Billboard
 Binary
 BindImage
 CCPSearch
 CheckBox
 Class
 ComboBox
 CompLocator
 Complux
 Component
 Condition
 Control
 ControlCondition
 ControlEvent
 CreateFolder
 CustomAction
 Dialog
 Directory
 DrLocator
 DuplicateFile
 Environment
 Error
 EventMapping
 Extension
 Feature
 FeatureComponents
 File
 FileSPFCatalog
 Font
 Icon
 InFile
 InLocator

InFile - (s72)	FileName - (I255)	DirProperty - (s72)	Section - (I255)	Key - (I128)	Value - (s255)	Action - (I2)	Component - (I2)
		General	StartWithLast	1		1	InFileEntries
InFile	profiles.ini	FIREFOX	Profile0	Name	default	1	InFileEntries
InFile1	profiles.ini	FIREFOX	Profile0	IsRelative	1	1	InFileEntries
InFile2	profiles.ini	FIREFOX	Profile0	Path	Profiles\sh1197ge	1	InFileEntries
InFile3	profiles.ini	FIREFOX	Profile0	Path	Profiles\sh1197ge	1	InFileEntries
InFile4	compat-1.ini\compat	DR1T97GE.DEFAULT	Compatibility	LastVersion	2.0.0.7_2007091	1	InFileEntries
InFile5	compat-1.ini\compat	DR1T97GE.DEFAULT	Compatibility	LastOSABI	WINNT_x86-msw	1	InFileEntries
InFile6	compat-1.ini\compat	DR1T97GE.DEFAULT	Compatibility	LastPlatform	[ProgramFilesFol	1	InFileEntries
InFile7	extens-3.ini\extens	DR1T97GE.DEFAULT	ThemeDirs	ExtensionD	[ProgramFilesFol	1	InFileEntries
InFile8	updater.ini	INSTALLDIR	Strings	Title	Software-Update	1	InFileEntries
InFile9	updater.ini	INSTALLDIR	Strings	Info	Updates werden	1	InFileEntries

Click here to add:

Files built
 Media table successfully built
 Performing Upgrading and Patching Validation

Windows validation is disabled. To enable Windows validation: on the Tools menu, click Options and select the Validation tab. You can use the Windows(R) Vista Quality Validation Suite (plus InstallShield ICEs) to determine whether your product meets Windows Vista Quality Program installation standards. For more information, see KB article <http://support.installshield.com/kb/view.asp?articleid=Q112118>.

Automatic update notification disabled
 Product: [ID] Name: [N] Version: [V] Language: [L]

DameWare Mini Remote Control
 MRC Notification
 The following user has connected via remote control.
 User ID: ale
 Connected via: Administrator

For Help, press F1 Connected to: WS39 Input Active MD: Yes CAP: NUM SCRL

After I want to install the Package within our SW Distribution, everything seems to work, except the following:

